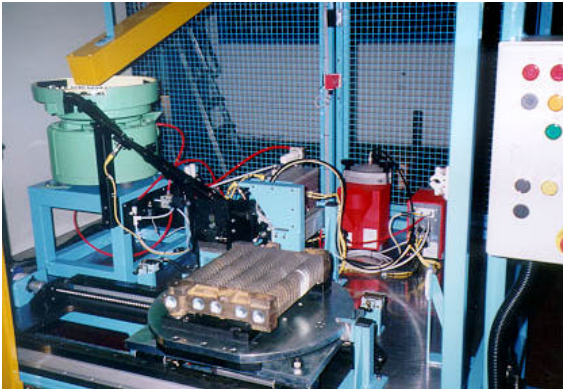


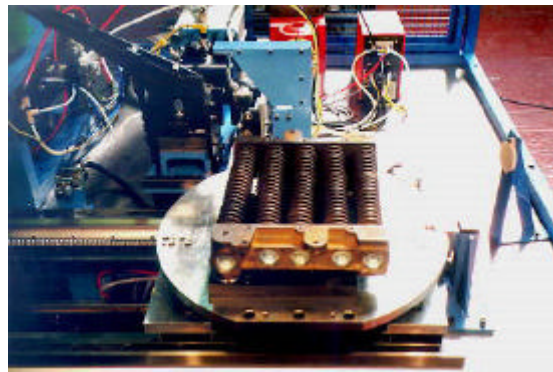
automatic adhesive dispensing and part insertion



This rig is designed to handle two cast heat exchangers. The machine automatically applies adhesive and inserts core plugs, one at a time, into ten machined holes.

The single part anaerobic adhesive was applied to the inside of the hole before the plug was inserted.

The operator loads the casting to this platform, where it indexes from the gluing head to the press tool. Holes 1 through 5 are filled, the casting rotates 180° and holes 6 through 10 are filled. Including load and unload, the machine cycle is 120 seconds. The machine is fully automatic being controlled by a proprietary PLC unit.



This machine is another example of the application of automatic adhesive dispensing. The adhesive is a 2 part mix supplied from 210 litre drums, which are to be kept at a controlled temperature. The dispensing gun mixes the constituents in the required proportions before being deposited as a gasket pattern to the parts.

As well as the X-Y motion from the table, the dispenser moves in the vertical and tilts to gain access to restricted areas.

Control on this unit is through an Allen Bradley PLC complete with Human Machine Interface (HMI), giving system monitoring and fault diagnostics.

